



# **Town Shop Space Needs**

**Town of Eagle Point**  
**October 2022**

# Town Shop Space Needs

- The Town of Eagle Point road maintenance department operates out of two buildings, the existing 3,000 square foot shop and a 4,000 square foot cold storage facility.
- The shop houses tools and supplies for road equipment maintenance and repairs, work benches, a desk for record keeping and paperwork, a unisex restroom, and floor space for equipment repairs and storage.



Town Shop

# Town Shop Space Needs

- The Cold Storage facility provides space for storing seasonal equipment such as snowplows and wings, an asphalt patching machine, barricades and signs, sign posts and culverts (to protect from theft), and various items related to road maintenance.



# Town Shop Space Needs

- The existing shop lacks sufficient space for the storage and maintenance of winter road equipment. The common practice is to keep snowplowing equipment in the heated shop during winter months to maintain readiness for storm events and to return this equipment to the heated shop after snowplowing operations to de-ice and make repairs. This equipment includes three plow trucks with front end plows and wings, a road grader with V-plow and wing, and a front-end loader with a plow.





# Town Shop Space Needs

- As noted in the following photos, there is no floor space left for maintenance when all of this equipment is stored in the shop. In addition to the snowplowing equipment, the tractor with the ditch brush mower attachment is also kept in the heated shop during winter months to keep hydraulics warm for brush mowing, which continues throughout winter months when weather allows.
- Proposed opening in wall between existing shop and fire station will allow access between both spaces.

# Town Shop Space Needs



Typical winter equipment shop arrangement with three plow trucks, loader and tractor with brush mower.

# Town Shop Space Needs

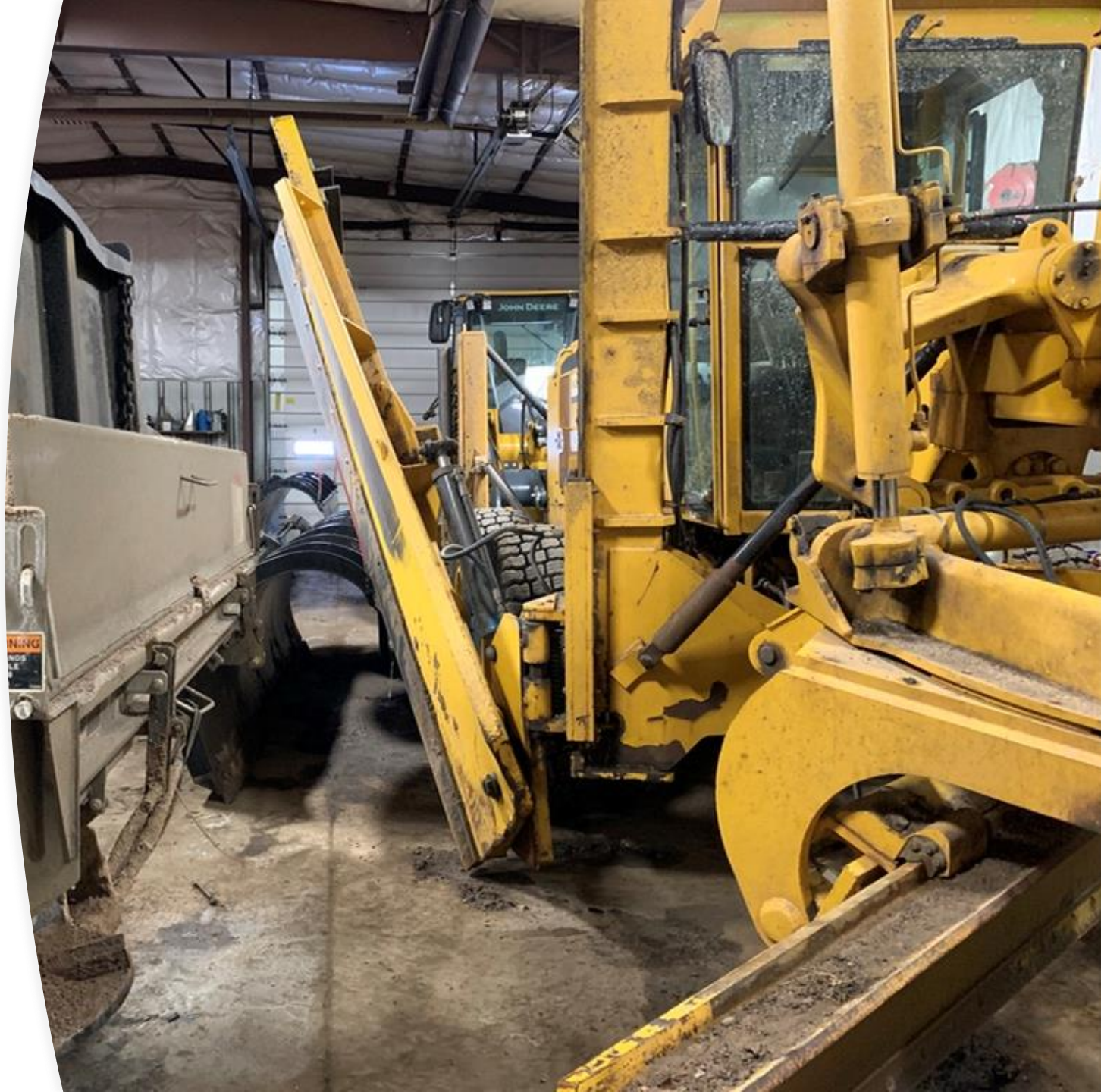


Third plow truck  
occupies space  
normally reserved  
for repairs  
(welding, etc.)



## **Town Shop Space Needs**

When the grader is stored in the shop with three plow trucks and the front-end loader, the need for space is even more critical.





# Town Shop Space Needs

**Plan to tour town shop  
during the Open House  
on October 22 from  
10:00 AM until 3:00 PM**

